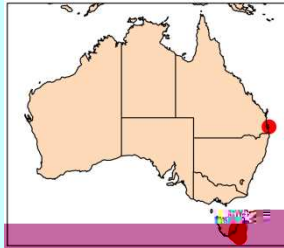


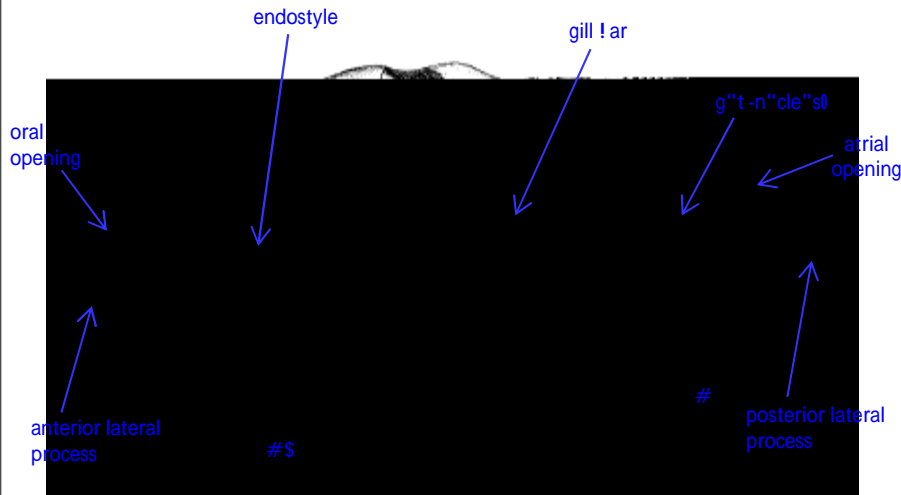
# *Ihlea magalhanica*

Apstein, S. (1978)



Phylum Chordata  
Order Salpa  
Family Salpidae

## Aggregate form



Thompson, S. (1978)

## Synonyms

None

## Aggregate Form

Size  
Up to 22 mm

## Body

- Zooids strongly symmetrical
- Almost oval shape
- Small lateral process anteriorly, longer process posteriorly
- Openings are terminal
- Test soft
- Preserved specimens appear flat

## Muscles

- Asymmetrical body muscles
- 2 pairs of muscles dorsally, 2 pairs of muscles medio ventrally by anastomosis
- 2 pairs of muscles (approach and may touch on either side)
- 2 pairs of muscles approach or touch dorsally
- 2 pairs of muscles (approach) ventrally

## Distribution

- Common in Southern Australian waters from October to February

## Ecology

- Low tolerance for warm water, indicator for cold water

